

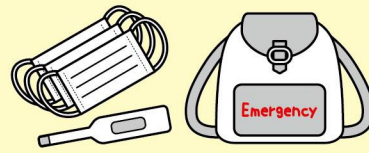
Watch out for COVID-19!

As a rule, people must evacuate out of harm's way during disasters.

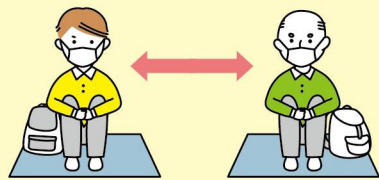
Consider evacuating to a relative's or friend's house to avoid crowded spaces.



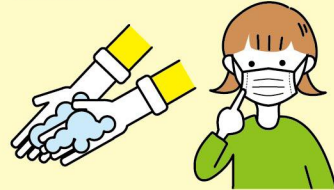
Include a thermometer and masks in addition to your normal emergency goods.



Avoid the 3C's (closed spaces, crowded places, and close contact)



Wash hands frequently and practice good coughing manners.



If you feel unwell, let someone know immediately.



Watch out for COVID-19!

Using hazard maps to evacuate

How you evacuate and protect yourself varies by situation and disaster type. Remember that YOU are responsible for protecting yourself. Pay attention to disaster information. You must make the decision to evacuate on your own, before disaster strikes.

How to evacuate and protect yourself

1 Have correct information

Know the disaster risks and evacuation shelters in your area. Know the different types of weather and evacuation information and their meanings.

2 Make correct decisions

Have disaster preparedness information on hand. Plan evacuation procedures to take based on that information.

3 Take correct action

Decide on family rules in case of a disaster (for example, evacuation shelters or methods of contact).

In order to evacuate properly, learn the disaster risks for your area by using hazard maps. Let's stay prepared!

Kagawa provides tools to help residents evacuate.

Kagawa Prefecture Disaster Recovery Information (app) (Kagawa Bosai Navi)

Main app functions

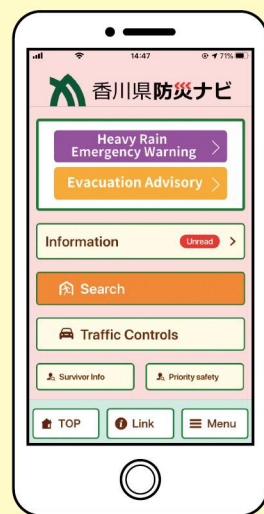
- Receive push notifications if in a disaster risk area
- View hazard maps and evacuation shelter locations
- Find routes to nearest evacuation shelter
- Check safety of registered family members or others

How to download

Scan the QR code on the right to install the application

User guide (Japanese only)

Download from the Kagawa Prefecture website.



Google play
で手に入れよう



App Store
からダウンロード

Non-smartphone users /

Disaster preparedness emails (Japanese only)

Receive weather and evacuation information by email on cellphones or other devices.

How to register

Scan the QR code on the right or send a blank email to ml@bousai-kagawa.jp, then register.



Hazard maps show areas with potential disaster risks

Landslides & Mountain Disasters

Debris flow, mudslide, or cliff collapse risk areas.

Landslide Risk Map

Hillside collapse, debris flow, or other disaster risk areas.

Mountain Disaster Risk Map

Floods

Flood risk areas and water height predictions for river overflows or storm surges.

Flood and Inundation Risk Map

Storm Surge Risk Map

Earthquakes

Seismic intensity predictions for Nankai Trough or other earthquakes.

Seismic Intensity Risk Map

Soil liquefaction risk areas.

Soil Liquefaction Risk Map

Tsunamis

Flood risk areas and water height predictions for a tsunami caused by a Nankai Trough earthquake.

Tsunami Risk Map

Reservoir levee breaks

Flood risk areas and water height predictions for levee breaks caused by earthquakes or other events.

Reservoir Hazard Map

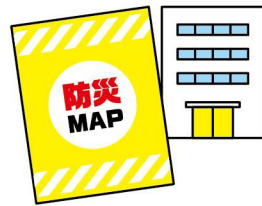
Road Flooding

Sections of road that are below ground level when passing beneath other roads or railroads.

Road Underpass Map

Where to find a hazard map (disaster preparedness map)

1 City or town halls



2 Local government websites



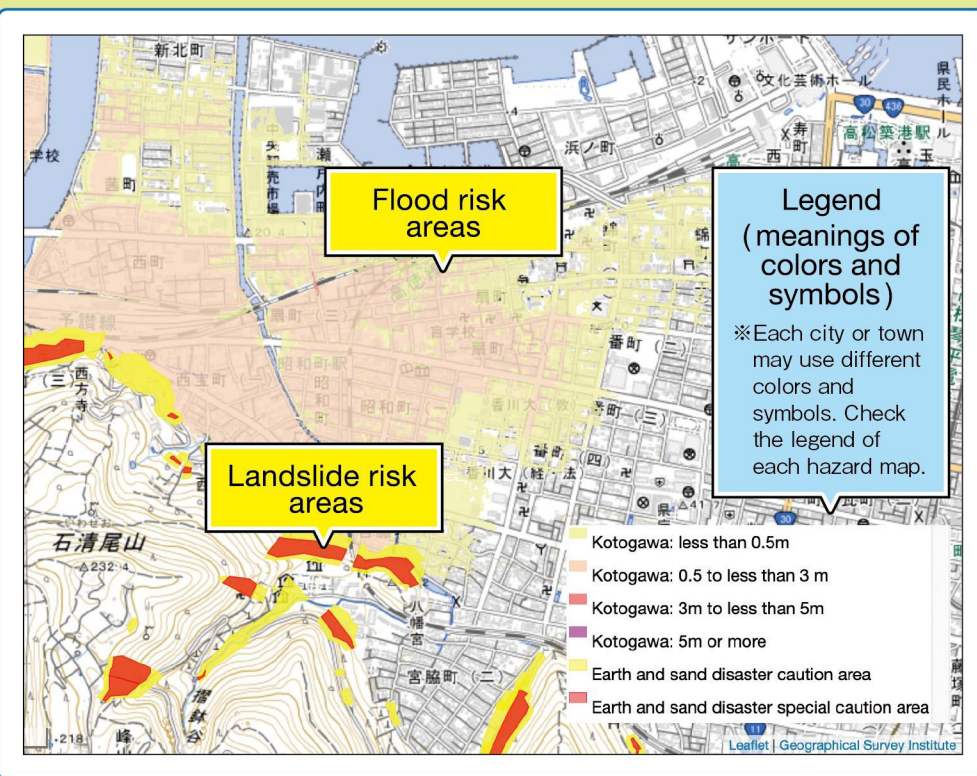
3 Kagawa Disaster Preparedness Web Portal



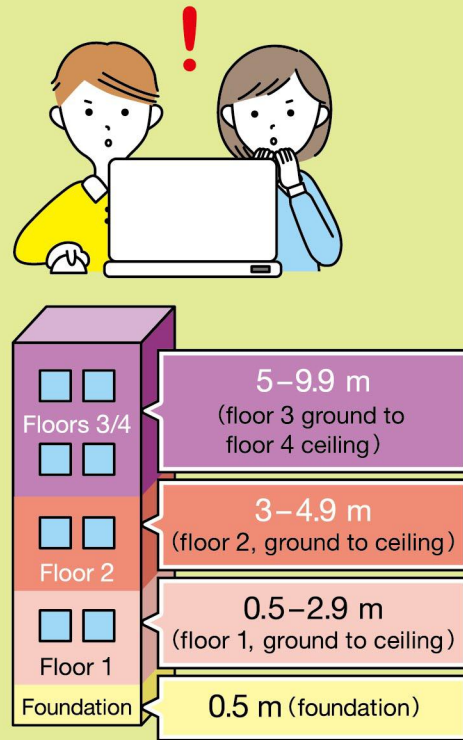
4 Kagawa Prefecture Disaster Recovery Information (app) (Kagawa Bosai Navi)



Reading a hazard map



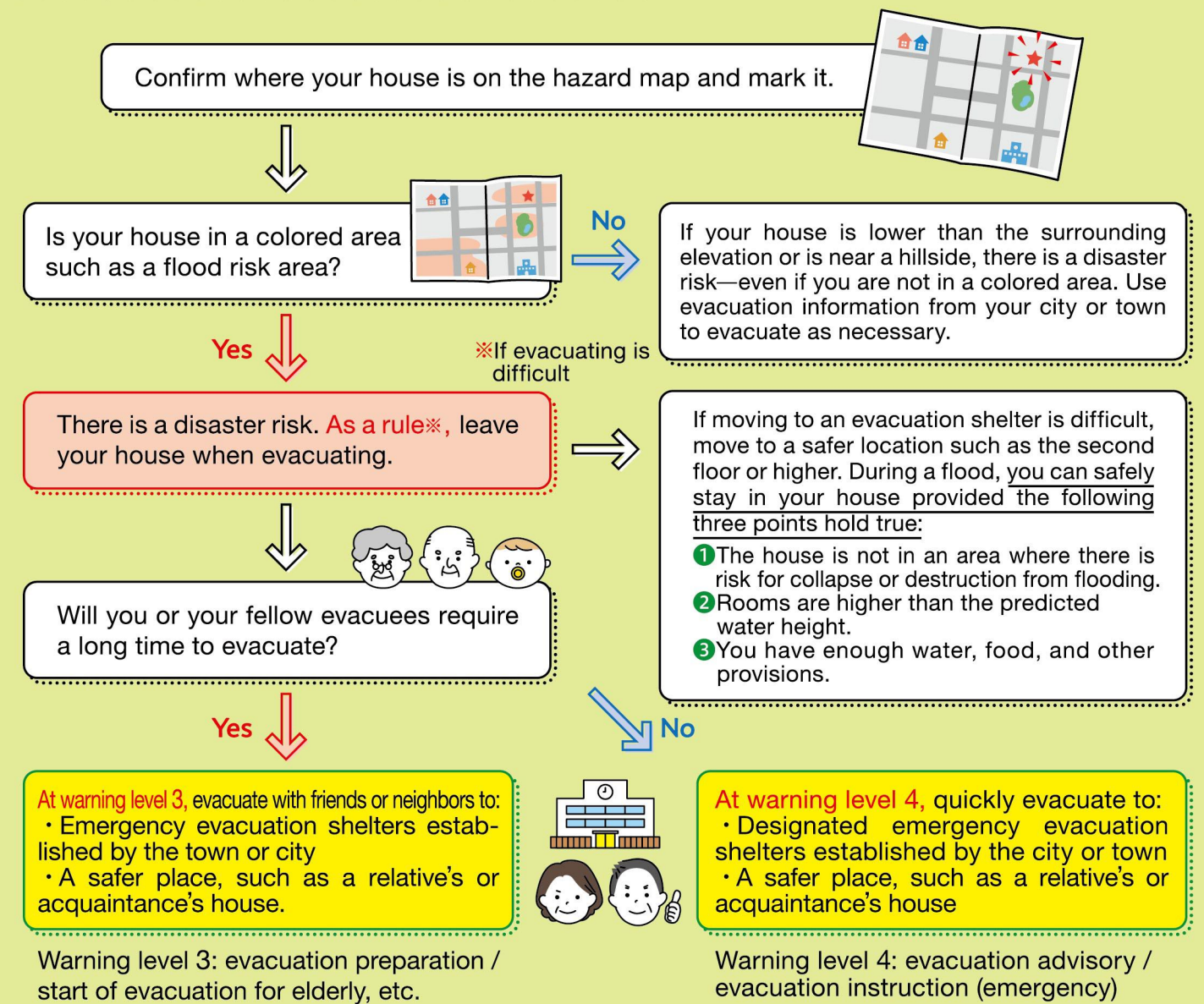
※Sample hazard map from the Kagawa Disaster Preparedness Web Portal.



Estimated water height

Using a hazard map

Plan your evacuation in the event of a typhoon or heavy rain. (Source: "Evacuation Decision Flowchart," Cabinet Office)



Points for evacuating properly:

Evacuation means leaving a place of danger.

If you can guarantee your safety in your own home, there is no need to put yourself in danger by moving to an evacuation shelter.

You can evacuate to places other than elementary schools, middle schools, or public facilities.

Consider evacuating to a safe place such as a relative's or acquaintance's house.

Walk your evacuation route to confirm it.

Note any dangerous spots or alternative routes.



Hazard Maps and the 2018 Japan Floods

Most damage from the 2018 floods occurred in areas previously announced to have a high disaster risk.

Flooded areas in the Mabi area of Kurashiki City (Okayama) matched flood risk areas from the hazard map almost perfectly.

However, though many people were aware of hazard maps, few understood the information sufficiently. Some residents may not have evacuated as a result.

Mabi-cho, Kurashiki City

- Flooded areas
- ▨ Flood risk areas from hazard map

